



TECHNICAL NETWORK LEADERSHIP

50 cc

Datasheet

Reference : 784684

GENERAL CHARACTERISTICS :

SPECIFICATIONS :

Company name : Elyséo 50 cc
Mines type** : G1A variante A
(*official French body responsible for regulating weights and measures and changes made to motor vehicles).

DIMENSIONS (in mm) :

Length : 1900
Width : 720
Height (without rear-view mirrors) : 1230
Ground clearance : 90
Wheel base : 1360

WEIGHT (in kg) :

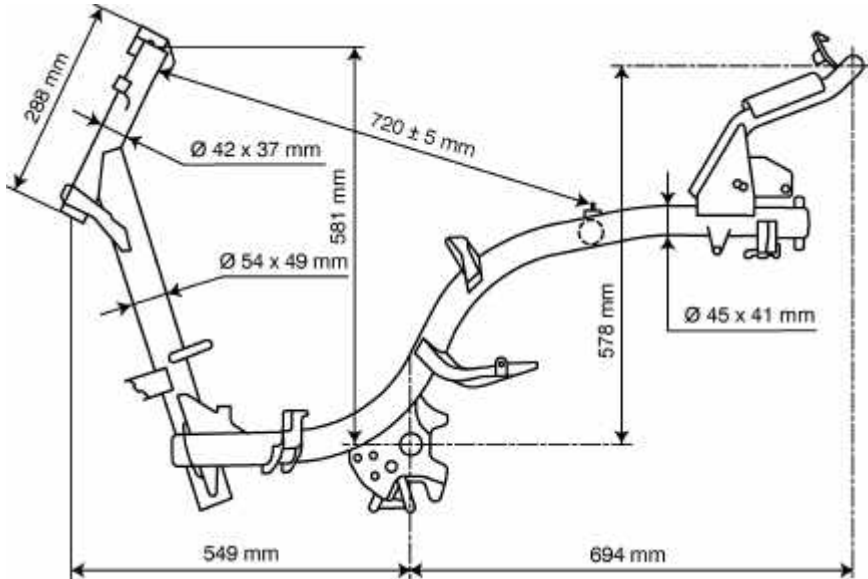
Laden weight : 99

STEERING :

Steering column mounted with ball-bearing cone and cup.

CAPACITIES (in litres) and RECOMMENDATIONS :

Fuel tank (including reserve) : 8,3 : super unleaded petrol (95 or 98) only.
Oil sump : 1,3 : semi synthetic or synthetic for two stroke engines with separate oiling. Complies with API TC or JASO FC standards.
Crankcase : *
Cooling system : *
Relay box : 0,12 . SAE 80W90
Fork : *
Braking circuit : DOT 3 or DOT 4



*: Not completed

LUBRICATION :

Separate lubrication by piston pump, either variable delivery synchronised with the throttle grip, or constant delivery (depending on model). Driven by hobbled pinion on the right shank of the crankshaft. The oil is injected directly into the carburettor.

COOLING :

By air circulation forced by a turbine fixed on the rotor of the flywheel magneto.

ENGINE :

2 stroke single-cylinder.
Direct intake via reed valve, into the crankcase.
Scavenging by 5 transfers.
Cylinder capacity : 49,1 cm³
Bore 1 shore : 40 x 39,1
Max power : 3,5 kW
Max power rating : 7000 to 7200 rpm
Max torque rating : 6600 to 6900 rpm

TRANSMISSION :

By 2 variable pulleys and V-type belt. 6-roller type drive pulley mounted on the left shank of the crankshaft. Fixed flange of the pulley equipped with cooling fins to cool the belt.
Driven/centrifugal 3-block lined clutch pulley mounted on the end of the relay box input shaft.

RELAY BOX :

By shaft and pinions. Double set of pinions.
• 1st gear teeth set : helical.
• 2nd gear teeth set : straight.

SUSPENSION :

Front suspension type : reverse telescopic fork.
Travel : 73 mm
Rear suspension type : combined hydraulic spring-shock absorber
Travel : 66 mm

FRONT BRAKE :

Single disc type, hydraulic control
Diameter of the brake piston : 30 mm
Disc diameter and thickness : 190 – 3,5 mm
Mini thickness : 3 mm
Diameter of the master-cylinder : 11 mm

REAR BRAKE :

Single cam drum type controlled by cable.
Brake drum diameter : 110 mm
Brake lining thickness : 4 mm

WHEELS AND TYRES :

Integral aluminium wheels and tubeless tyres.		
	Front	Rear
Rim dimensions :	3" x 12"	3,5" x 12"
Tyres dimensions :	120/70 - 12	130/70 - 12
Pressures (bar) :	1,3	1,6
Max wheel disc :	0,8 mm	0,8 mm
Balance :	*	*

TIGHTENING TORQUES (Nm) :

ENGINE :

Cylinder head : 12 to 15
Exhaust mounting on the cylinder : 15 to 18
Crankcase : 8 to 12
Spark plug : 20

CYCLE PART :

Engine mounting on connecting rod : 57 to 70
Front wheel : 60 to 70
Upper nut on the steering column : 70 to 80
Rear wheel : 100 to 120
Shock-absorber mounting, rear, upper : 43 to 50
Inner : 20 to 25
Front brake calliper : 25 to 35
Front brake disc : 27 to 32

ADJUSTMENTS AND CHECKS :

CYLINDER / PISTON :

Ring gap clearance.
Upper : 0,2 to 0,35 mm
Lower : 0,2 to 0,35 mm

CONNECTING ROD/CRANKSHAFT :

Crankshaft run-out : 0,12 mm

CARBURATION :

Carburettor.
Make : type : GURTNER PA
Adjustment n° : 390
Main jet : 74
Idle jet : 42
Needle (type and adjustment step) : L 3035 H 1ststep
Starter jet : 45
Mixture screw : 1 rpm 1/8
Idle adjustment : 1600 rpm ± 100
CO² % adjustment : *

IGNITION :

Ignition unit : ACI 100 MAGNETI MARELLI
Spark plug : NGK BR7HS or EYQUEM R850
Electrode gap : 0,6 to 0,7 mm
Ignition advance : variable
Ignition coil : TEC MP11 or T11C X7A
Primary winding resistance : 0,26Ω ± 20%
Secondary winding resistance : 3 kΩ ± 20%
Spark plug cap resistance : 5 kΩ ± 10%
Pick-up resistance : 120Ω ± 10%

ELECTRICAL EQUIPMENT :

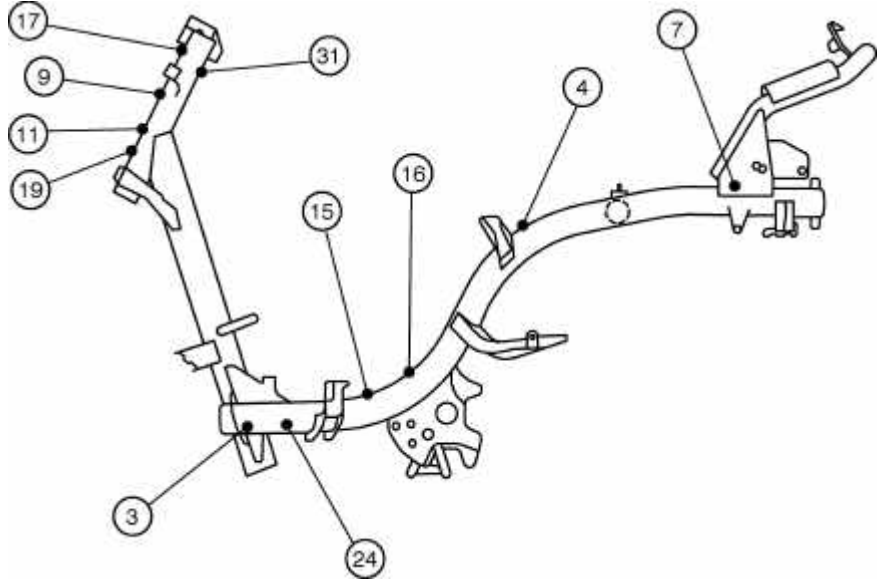
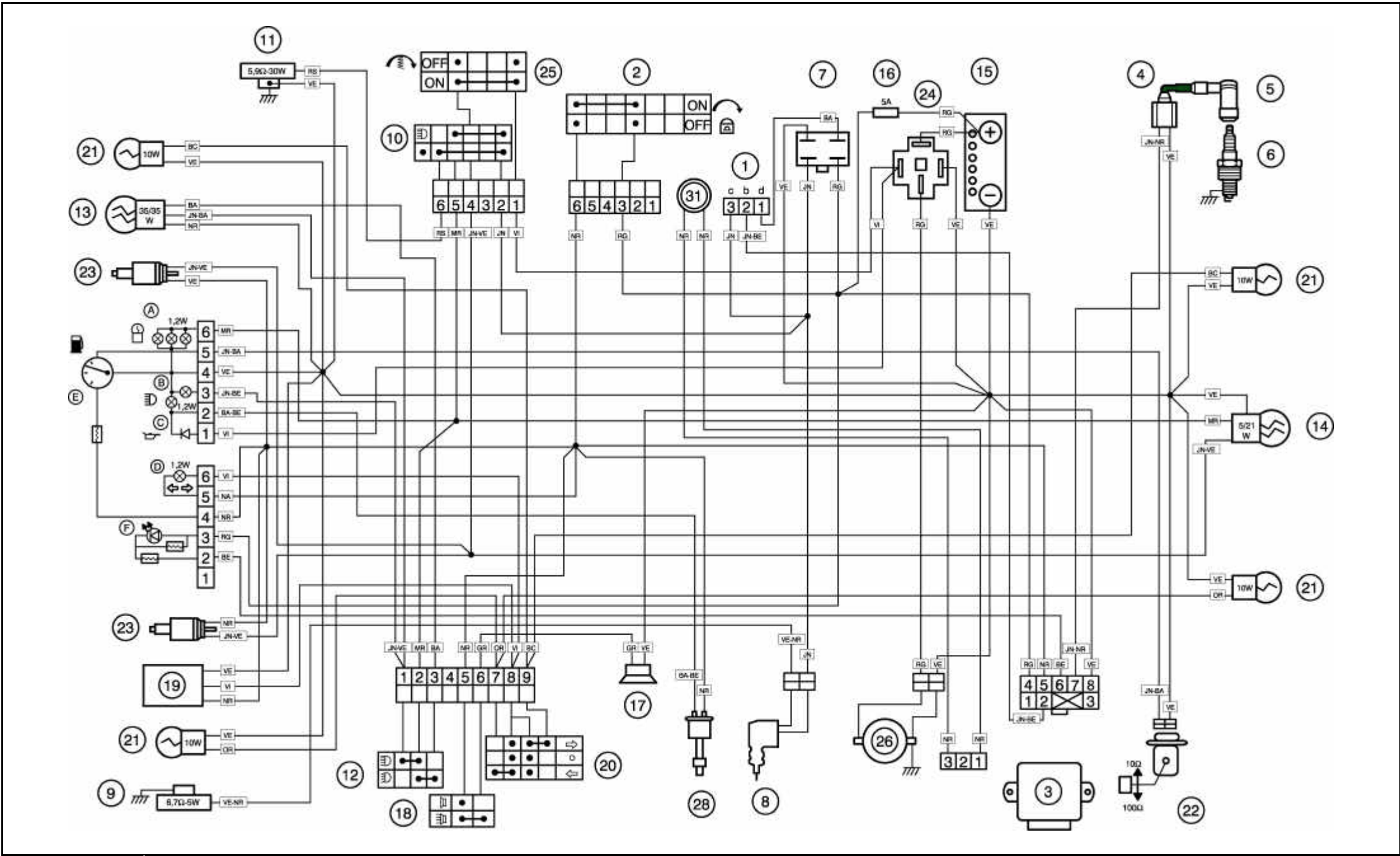
Current generator (type and power) : GF10 – 232 – 90W
Make : MITSUBA
Stator resistance : yellow wire 0,6Ω ± 25% -
white wire 0,7Ω ± 25%
Battery regulation voltage : 14,5 ± 0,5V
Battery (type and capacity) : YT4LB 12V4Ah
Lighting voltage : alternating current regulation at : 13,1 ± 0,5V

STARTER :

Power and type : 150 W SM10254
Make : MITSUBA

LIGHTING AND FUSES :

	Quantity	Power
Headlamp (code light) :	1	12V - 35/35W
Red stop lamp :	1	12V - 21/5W
Indicator lamps :	4	12V - 10W
Number plate lightning :	*	*
Dash board lighting :	3	12V - 1,2W
Instrument panel indicator lamps :	3	12V - 1,2W
Main fuse :	1	5A
Signalling fuse :	*	*
"Side light" bulb :	*	*



A Instrument panel lightning	7) Regulator, rectifier (A) : Regulator AC (B) : (Regulator) rectifier DC	23) Stop light switch	BA : White
B Main beam control	8) Automatic choke	24) Starter relay	BA-BE : White/Blue
C Oil level warning light	9) Resistor (in line with choke) 6,7 – 5W	25) Starter switch	BA-NR : White/Black
D Indicator control light	10) Light switch	26) Starter motor	BC : Light blue
E Fuel gauge	11) Resistor (parallel to lightning) 5,9 – 30W	27) Current limiter	BE : Blue
F LED "Anti theft device"	12) Dip switch (main/low headlight)	28) Oil level switch	GR : Grey
G Temperature gauge	13) Headlight	29) Temperature sensor	JN : Yellow
H Warning light "reserve"	14) Stop /tail light	30) Immobilizer	JN-BA : Yellow/White
J Oil pressure warning light	15) Battery	31) Antenna for anti-theft device	JN-BE : Yellow/Blue
1) Generator	16) Fuse	32) "Side light" bulb	JN-NR : Yellow/Black
a : Ignition coil (inner)	17) Horn	33) Number plate light	JN-VE : Yellow/Green
b : Pickup	18) Horn switch	34) Lateral stand switch	MR : Brown
c : Alternating current	19) Indicator relay	35) Emergency switch (ignition)	NR : Black
d : Battery charge current	20) Indicator switch	36) "Neutral" switch (gearbox)	OR : Orange
2) Ignition switch	21) Indicator bulb	37) Oil pressure switch	RG : Red
3) CDI unit	22) Fuel gauge pickup	38) Cooling fan	RG-NR : Red/Black
4) Ignition coil (High voltage)		39) Thermo-switch cooling fan	RS : Pink
5) Spark plug socket (resistive) 5 k		40) Electrical carburettor heating	VE : Green
6) Spark plug (resistive) 5 k		41) Power supply unit	VE-NR : Green/Black
		42) Switch "Reserve"	VI : Purple